

# One borough; one community; London's growth opportunity



Encouraging civic pride



Enabling social responsibility



Growing the borough

For more information visit  
[lbbd.gov.uk/visionandpriorities](http://lbbd.gov.uk/visionandpriorities)

# Learning Disability Partnership Board Delivery Plan

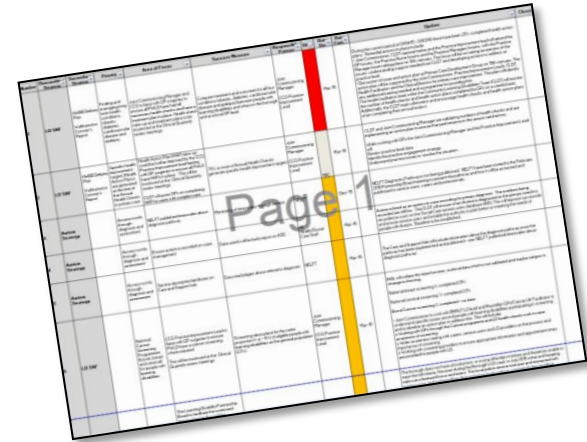
**Presented by:**

**Mark Tyson, Group Manager Integration and Commissioning**

**January 2016**

# Summary

- Delivery Plan created to give assurance to the Health and Wellbeing Board
- Monitored at each LDPB meeting
- Improvement plans put in place for **RED** or **AMBER** actions



**Incorporates the key national and local drivers:**

Learning Disability Self Assessment Framework (LDSAF)

Autism Strategy

Winterbourne View Concordat and the Transforming Care Agenda

Challenging Behaviour Plan

Carers Strategy

**One borough; one community;  
London's growth opportunity**

# Structure of the report

<b>GREEN</b>	<b>27</b>	Achieved or on target to be achieved indicating no concerns
<b>AMBER</b>	<b>11</b>	Where progress has been slow and requires attention
<b>RED</b>	<b>1</b>	Little or no progress with a significant risk of the outcome not being achieved

# Health Checks

- 25% are recorded as having had a health check within the past 12 months
- 90% of service users have a health action plan in place

## IMPROVEMENT PLAN

- CLDT support through data validation, monitoring, training and visiting GP practices;
- Empowering service users and providers to ask for health checks and understand what to expect;
- Attendance at Primary Care Improvement Group, with forums of practice managers, GPs, and practice nurses – validate proposed actions;
- LDPB to receive an update at each of their meetings.

# Other amber areas...

**Cancer screening programmes**

**Offender health and the criminal justice system**

**Housing provision for people with Autism**

**Autism Diagnostic Pathway and publicising the pathway**

**Accurate reporting of autism on the social care database**

# Transforming Care: The Winterbourne View Concordat

Reduce the number of people residing inappropriately in specialist learning disability and autism hospitals and services.

Reduce the length of stay in these services (where appropriate).

Improve the quality of care in these services.

*At the start of  
the register in  
April 2013:*

*6 people*

*Since then, 10  
people have  
been discharged  
and 8 people  
admitted...*

**Now 4 people on the  
register:**

**3 individuals from 2013/14  
1 individual from 2015/16**

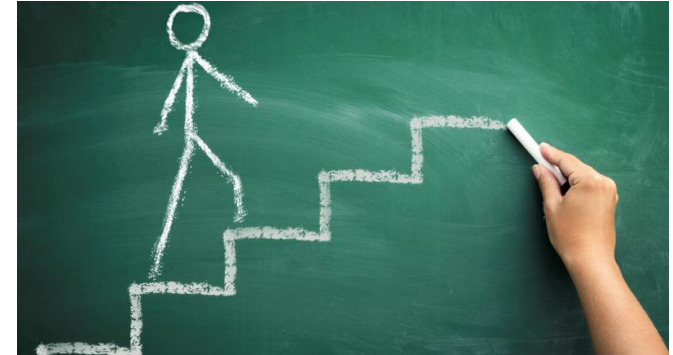
**0 readmissions and performing above London average for discharges**

**One borough; one community;  
London's growth opportunity**

# Transforming Care: The Next Steps

**Gate-keeping** to Assessment and Treatment Units

Development of an '**At Risk Register**'



Establishment of the **Transforming Care Partnership**:

- Announced in October 2015;
- Aims to close 40 – 65% of all hospitals, bring more people into the community and commission services to meet local needs;
- Set up to coordinate, commission and challenge. Across BHR and includes LAs, CCGs, providers and service users;
- Currently drafting local plan and taking to LDPB in February.

**One borough; one community;  
London's growth opportunity**